

ELITE EVENTS

LONDON

17TH - 18TH SEPTEMBER 2021

WYCOMBE AIR PARK, BUCKINGHAMSHIRE

London's combined lifestyle showcase

SUMMER 2021

The Elite Events - London is 'London's combined Lifestyle showcase'. A collection of 7 show sections featuring 200 + lifestyle related products and services across different lifestyle sectors, including 20 + amazing experiences, all at one place.

Wycombe Air Park will be host to this unique 2021 Summer event. Close to the town of Marlow on the western edge of London, makes it an easy and attractive venue for all visitors by air, road and rail. Wycombe itself is set within the Chilterns much of which is classified as an Area of Outstanding Natural Beauty.



LONDON'S COMBINED LIFESTYLE SHOWCASE

ELITE EVENTS

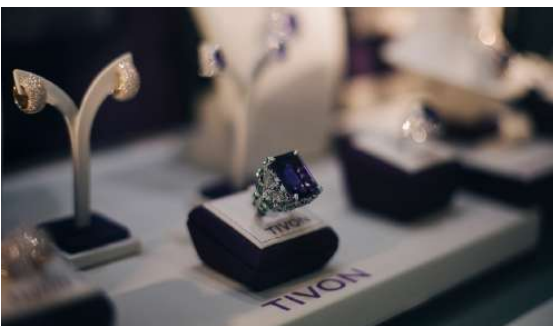
LONDON



PRIVATE FLYER



**SUPERCAR
SHOWCASE**



LUXURY BRAND SHOW



**The
Marine
Showcase**




E.J. CHURCHILL
Shooting and Country Show



EXCLUSIVELY
HOME & PROPERTY



PRIVATE FLYER

Harness the benefits of private aviation for
your business or lifestyle needs.

PRIVATE FLYER

Private Flyer UK will showcase the latest products, services and aircraft all at a unique and exciting venue. Plus, gain expert knowledge within our daily series of seminars covering all areas of private flying from industry experts.

An opportunity to experience a hands-on wide selection of fixed wing aircraft, turboprops, helicopters and pre-owned aircraft, for private or corporate use.

Furthermore, meet the companies who can help you harness the benefits of private aviation for your business or lifestyle needs.



A close-up, high-angle shot of a luxury car's interior. The focus is on the driver's side, showing a red and black leather-upholstered seat with a quilted pattern. The steering wheel is visible in the upper right, and the center console with a gear shifter is in the lower right. The lighting is dramatic, with strong highlights and deep shadows, emphasizing the textures of the leather and the sleek design of the car's interior.

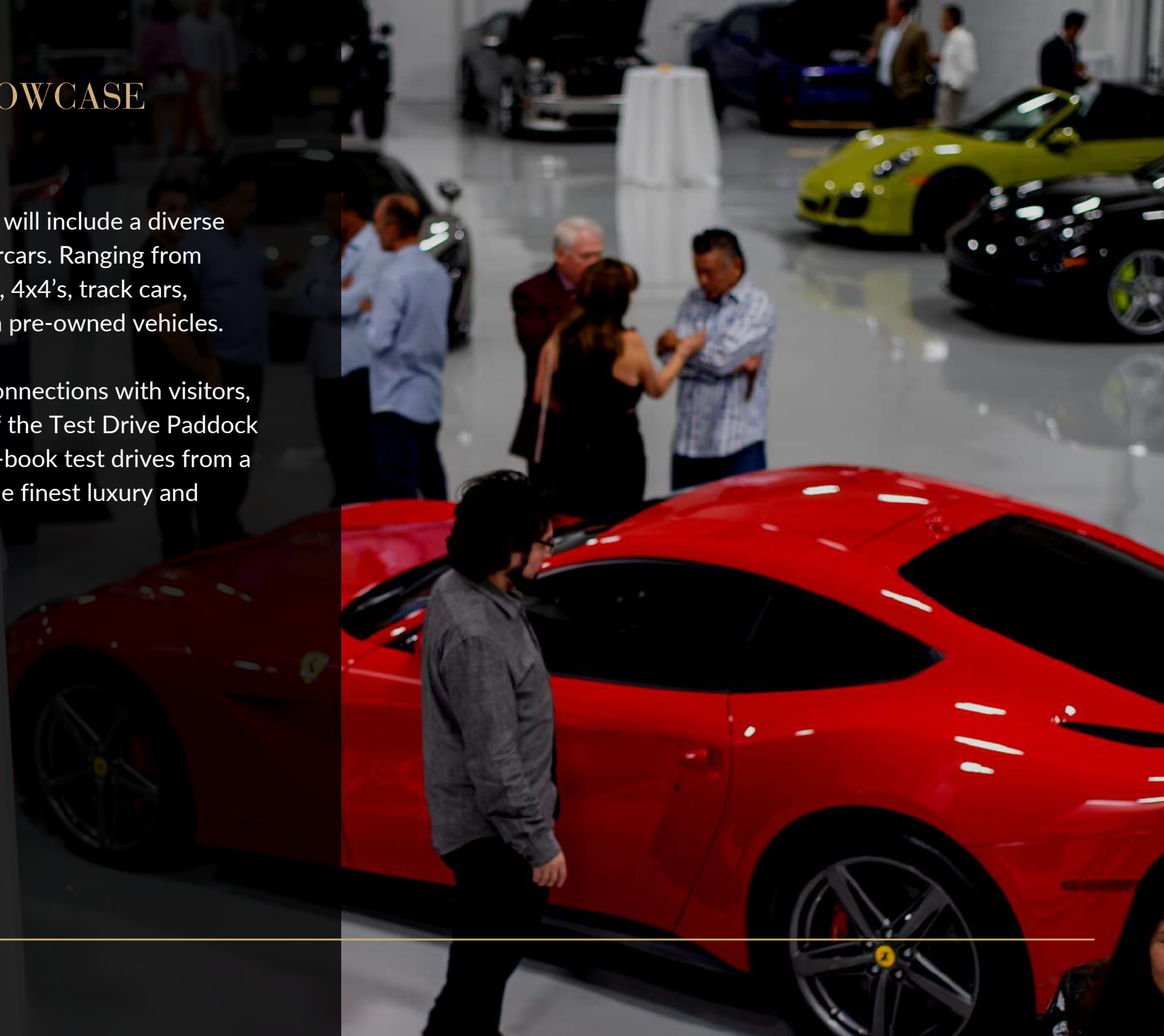
SUPERCAR SHOWCASE

Pedigree, performance and prestige are the key components of this luxury automotive showcase.

SUPERCAR SHOWCASE

The Supercar Showcase will include a diverse range of premium motorcars. Ranging from classic cars, custom cars, 4x4's, track cars, motorcycles to premium pre-owned vehicles.

To increase pre-show connections with visitors, the additional feature of the Test Drive Paddock will allow visitors to pre-book test drives from a stunning collection of the finest luxury and supercar brands.





BRITISH GOLF SHOW

Whether you are new to the game, a seasoned player or looking for a family day out, The British Golf Show will have something for everyone!



THE BRITISH GOLF SHOW

The event will showcase the best products and services from the leading golf suppliers with emphasis on equipment, technology and travel, whilst also offering the opportunity for all visitors to hit the clubs on our driving range and simulators.

We are delighted to offer exhibitors and visitors the opportunity to try out all of the latest products from the biggest brand names. Take the short shuttle ride to the outdoor driving range area and test your skills and the latest products on our 300 yrd driving range.





LUXURY BRAND SHOW

Featuring stunning brands from fine art to fashion and luxury gifts to exquisite jewellery, visitors will be treated to a selection from sought after brands.

LUXURY BRAND SHOW

The Luxury Brand Show is a premium lifestyle feature area within The Elite Events - London that provides a unique showcase platform for luxury brands to exhibit and engage with a high calibre audience.

Specifically, content will include:

- Fashion Boutiques
- Art Galleries
- Finance
- Beauty & Wellness
- Sports & Leisure
- Travel





The Marine Showcase

Meet the finest in marine brands
and explore the latest in ownership
and charter.

THE MARINE SHOWCASE

The selection of boats on display are guaranteed to not only inspire but also open the way to a world of unrivaled opportunities afloat.

Leading brands will be represented at the show and offer a wealth of expertise to assist with all personal enquiries related to ownership, part ownership or charter of any marine products, either on display or within their inventory.





E.J.CHURCHILL

Shooting and Country Show

Showcasing a variety of country life brands and shooting experiences in partnership with E.J.Churchill.

SHOOTING & COUNTRY SHOW

The E.J. Churchill Shooting and Country Show showcases the best in country life. In partnership with E.J. Churchill, visitors will not only be able to shop a variety of industry related products and services but experience for themselves the sport so massed in British heritage and culture.

The 'Shooting & Country' section will comprise of a cross selection of country life brands and services including;

- Clothing and Accessories
- Property
- Sports Equipment
- Gifts and Experiences

Visitors will be able to extend and compliment their visit to the Elite Events - London by visiting the E.J. Churchill grounds to experience an array of sporting and shooting exercises. our



A modern interior scene featuring a dark green modular sofa with several cushions, including one with a white and brown pattern. In the foreground, a low, round coffee table holds three tall, slender glass vases containing dried flowers. A large, abstract sculpture made of many small, light-colored, leaf-like pieces hangs from the ceiling. The background is a wall made of large, rectangular stone tiles. To the left, a framed abstract painting is visible.

EXCLUSIVELY HOME & PROPERTY

Designed to fill a gap in the market we are launching what is anticipated to become the foremost luxury home and property show in the UK.

HOME & PROPERTY SHOW

Designed to showcase leading designers, developers, manufacturers and artisans that emanate from London, the UK and internationally, the show will be offering a range of specialists in the form of a stunning boutique exhibition.

In addition to the well known leading luxury brands, the show will feature a curated collection of companies, not always found on the high street that provide exceptional products and services.

Access an international showcase of property specialists with a track record in providing exceptional products and services.



EXHIBTING OPTIONS

Early bird booking discount before April 30th 2021.
Increased amount applies thereafter.

Indoor Stand Space

3m x 3m stand	£1,900 + vat / £2,175 + vat
6m x 2m stand	£2,450 + vat / £2,900 + vat
6m x 3m stand	£3,600 + vat / £4,300 + vat
9m x 3m stand	£5,500 + vat / £6,500 + vat

Indoor Open Space

Available at

6m x 6m or larger £130 + vat PER m²

Single Vehicle Space £1,750 + vat PER car

Outdoor Space

Available at

6m x 6m or larger £75 + vat PER m²

Single Vehicle Space £1,250 + vat PER car

The collaboration between event organisers, media partners and affiliated partners offers a combined marketing resource like no other to ensure success for all exhibitors at The Elite Events - London.

This specialist show breaks the traditional show format. With a unique location and collection of lifestyle brands, The Elite Events - London has been designed to offer new opportunities to meet consumers and suppliers and effectively demonstrate the benefits of your products to a new and wider audience.



SECURE YOUR PLACE

PRIVATE FLYER

Alex

+44 (0) 203 740 6085
alex@theeliteevents.com

SUPERCAR
SHOWCASE

Roxy

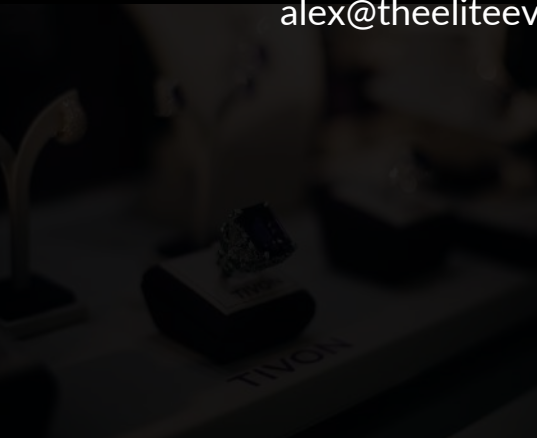
+44 (0) 203 740 6086
roxana@theeliteevents.com



BRITISH
GOLF
SHOW

Andy

+44 (0) 203 740 6082
andrew@theeliteevents.com



LUXURY BRAND SHOW



The
Marine
Showcase



EL CHURCHILL
Shooting and Country Show



EXCLUSIVELY
HOME & PROPERTY

www.theeliteevents.com

The Elite Luxury Events Ltd, Palmers Barn, Station Road, Long Marston, Tring, Hertfordshire, HP23 4QS